



T3M SERIES



No. 777 Hua'ao Road, Innovation Zone, Jinan, 250101
Shandong Province, China
<https://www.sinotrukinternational.com>



Company History

Since developing and manufacturing China's first heavy-duty truck, SINOTRUK has continually forged ahead with innovation.



Sinotruk produced China's first truck - Huanghe JN150 8T truck.

1960 ●



● 1983

SINOTRUK officially signs a contract with Austria's Steyr-Daimler-Puch AG for introducing the manufacturing technology of Steyr 91 series heavy-duty truck, the first of its kind approved by the Chinese government.



2003 ●

Sinotruk and Volvo signed the joint venture project on heavy trucks, and the joint venture company was established.



● 2009

SINOTRUK and MAN have entered an agreement for strategic cooperation, through which, MAN has become a shareholder of SINOTRUK (Hong Kong) Limited. Since then, both sides initiated cooperation in every respect such as complete vehicle, engine, chassis, axle etc.



China's exclusive National Heavy-duty Automotive Engineering Technology Research Center was completed .

2015 ●



● 2020

Adhering to a forward-thinking R&D approach, SINOTRUK combines cutting-edge local and international technologies to redefine its high-end, homegrown brand. The brand-new, next-generation Huanghe heavy-duty truck has been officially unveiled in Ji'nan.



Sinotruk (Hong Kong) Limited

Sinotruk (Hong Kong) Limited was listed on the Main Board of the Hong Kong Stock Exchange in 2007. Its parent company, China National Heavy Duty Truck Group Co., Ltd., manufactured China's first heavy-duty truck in 1960, and is now the largest heavy-duty truck manufacturing and export base in China.

With more than 48,000 employees, SINOTRUK offers a full range of heavy-, medium-, light-duty and special-purpose vehicles, serving a wide and diversified customer base. SINOTRUK is headquartered in Jinan, Shandong Province, and its production bases are distributed in 8 provinces.

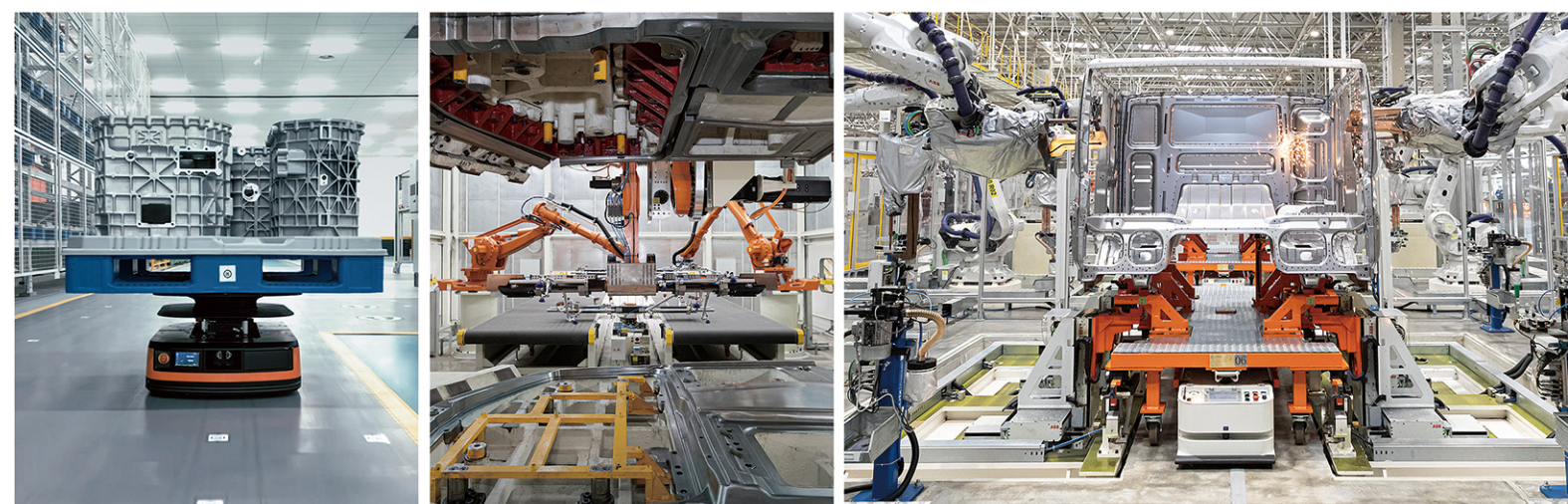
SINOTRUK also hosts the nation's only government-approved national-level Heavy-Duty Truck Engineering Technology Research Center and National Heavy-Duty Truck Quality Inspection Center.

- ▶ The birthplace of China's first heavy-duty truck
- ▶ China's largest heavy-duty truck manufacturing and export base
- ▶ The only national engineering research center for heavy duty truck in China
- ▶ Corporate core values: We aim at customers' maximum satisfaction

We provide users with logistics equipment, solutions, and services that continuously expand their benefits, helping customers maximize their profits

Manufacturing capability

As a global commercial vehicle group, we have world-class manufacturing capability from parts to complete vehicles. Based in Jinan, we operate complete vehicle and component factories across 8 provinces in China. Our facilities include the longest vehicle assembly line in Asia, an ABB robotic digital welding line, the industry's largest 5000-ton intelligent and digital stamping line, as well as an automated engine production line.



R&D capability

We have an R&D team of more than 8,000 professionals, covering the whole vehicle, core components, materials, processes, and applications. With an annual R&D investment of approximately USD 600 million, we possess full capabilities in the research, development, and testing of core parts such as engines, transmissions, and axles.



T3M Series Light-duty Trucks

The T3M series light-duty truck is a premium product developed by SINOTRUK with a global perspective, integrating leading European truck technologies and built to international standards. It is designed for urban smart, comfortable and efficient logistics.

It is equipped with the self-developed 8AT, setting benchmarks in quality and pioneering the future through innovation.



GVW 12000Kg
190Ps



GVW 6000Kg
150Ps



GVW 4495Kg
140Ps



GVW 6000Kg
150Ps



GVW 7500Kg
170Ps



GVW 9500Kg
180Ps



GVW 14000Kg
190Ps

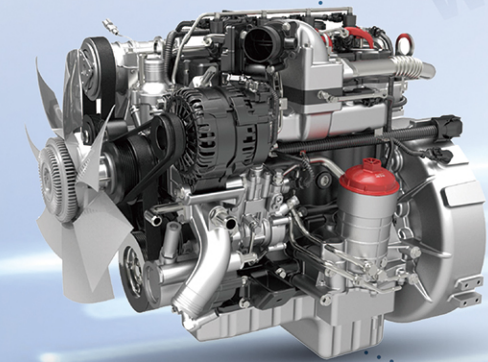
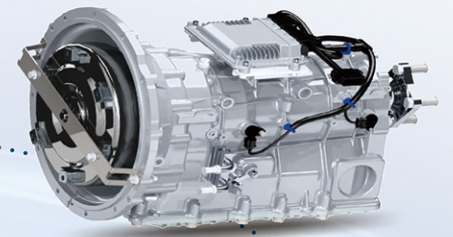
Rich power combinations

The powertrain of the T3M series is based on SINOTRUK's self-developed products, while also widely incorporating power components from well-known enterprises—effectively meeting power demands across various working conditions.

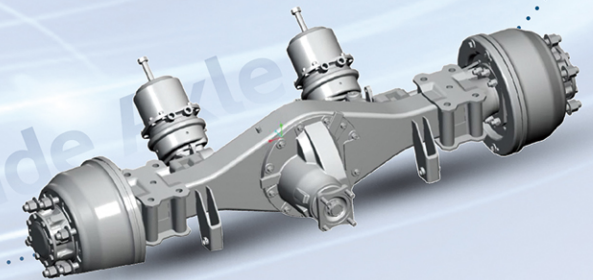
Engine	SINOTRUK	WEICHAI 潍柴	FOTON 福田康明斯	玉柴 YUCHAI	ISUZU 江西五十铃	云内动力 YUNNEI POWER
	MC05.16 MC05.18 MC05.21	WP2.3/2.5 WP3 WP4.1/4.6	ISF2.8 ISF3.8 F4.5	YC4D130/140 YC4E140/160 YC4FA115/120 YC4S120/140/150	JE493	YN27/33/38/D19/ D20/D25/D30
Transmission	FAST F.T.N		WLY 万里扬		SINOTRUK	
	C6J45/C6J55/8J45/8J50 /8JS75/8JS85		WLY5G32/WLY5G40B/WLY6G40/WLY6GS42/ WLY6T50/WLY6TS55/WLY6G55/WLY8GS46		HW95508STC/HW90510C/ HW95508ACL/HW95510ACL	
Axle	汉德车桥 HANDE AXLE					
	130/1058/1061/1080/1118/153					

AT SR-8AT500R transmission

- The only 8AT in the industry
- Multi-mode switching at will - sports, ECO, snow
- TC torque boost, delivering stronger performance in starting, hill climbing, and getting out of tough spots
- Hydraulic torque conversion and continuously variable transmission, eliminating shift shocks



Abundant power Engine

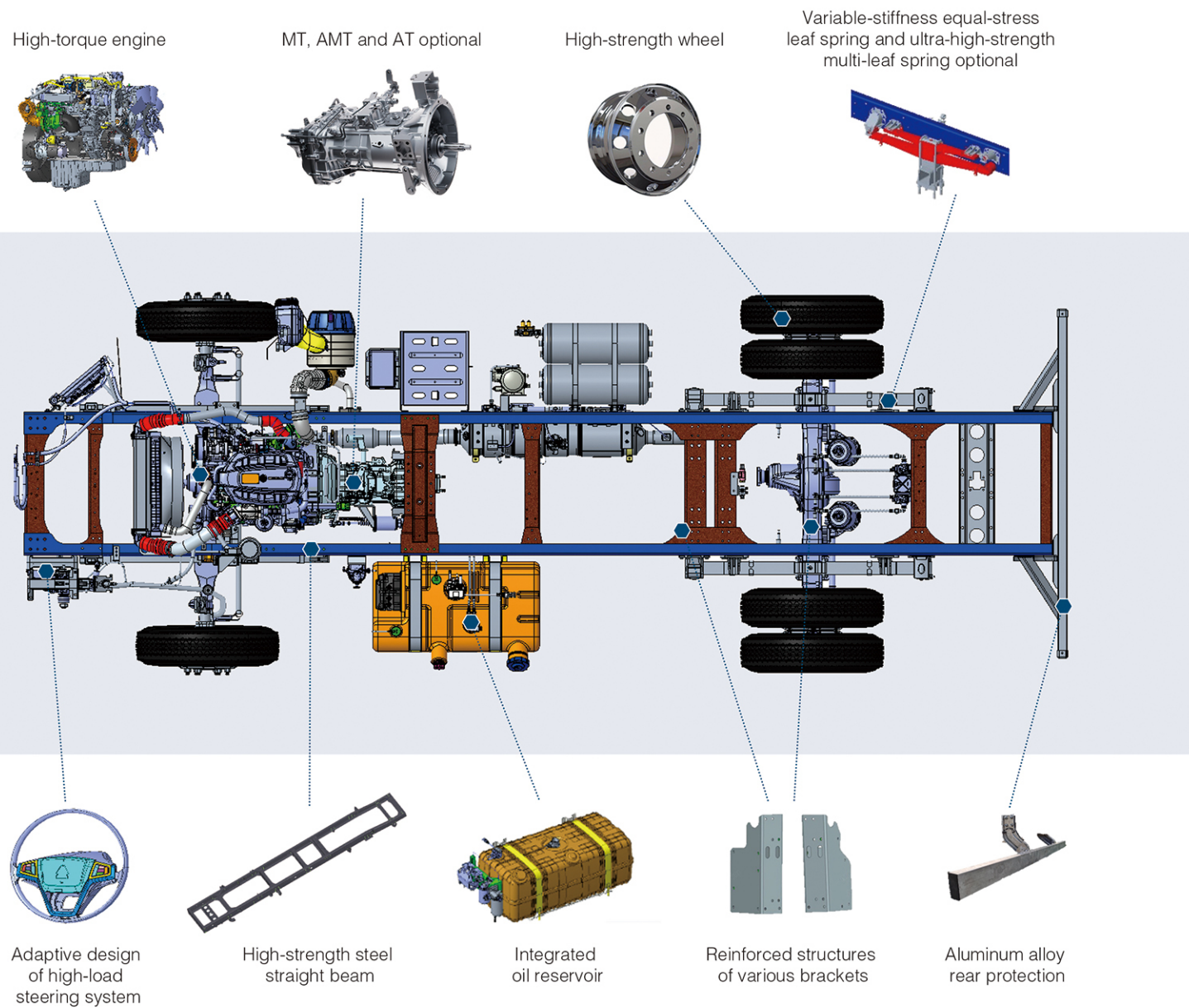


Hande Axle

- Axle housing fatigue: average service life of 1,000,000 times, with ultimate bearing capacity exceeding that of competitive products by 18%
- Integration: integrated design of final drive housing and differential housing making the weight 2% lighter than that of competitive products
- Transmission efficiency: reasonably designed gear clearance, with transmission efficiency reaching more than 96%
- Long oil change period: HD-R03 lubricant applied, with an oil change interval of 120,000 km
- Maintenance-free: open type wheel hub bearing unit of maintenance-free for life

Exceptional Load-bearing Capacity, Economical and Efficient

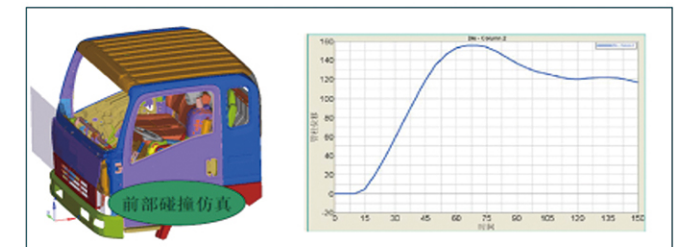
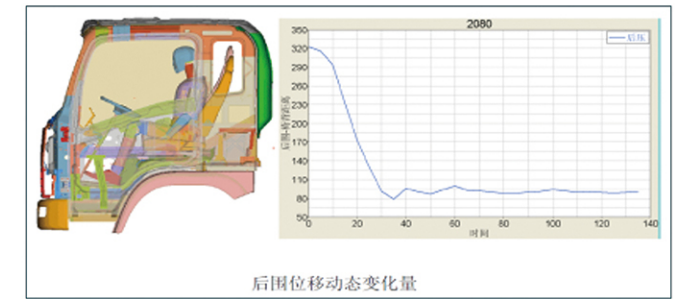
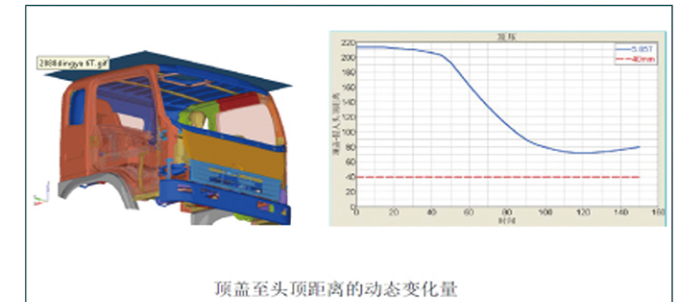
The T3M series has undergone a series of enhancements to its load-bearing system, while also adopting lightweight technology. With the same total weight, the application of lightweight technology in the T3M series increases its load capacity, thereby improving user benefits.



Safe and Reliable

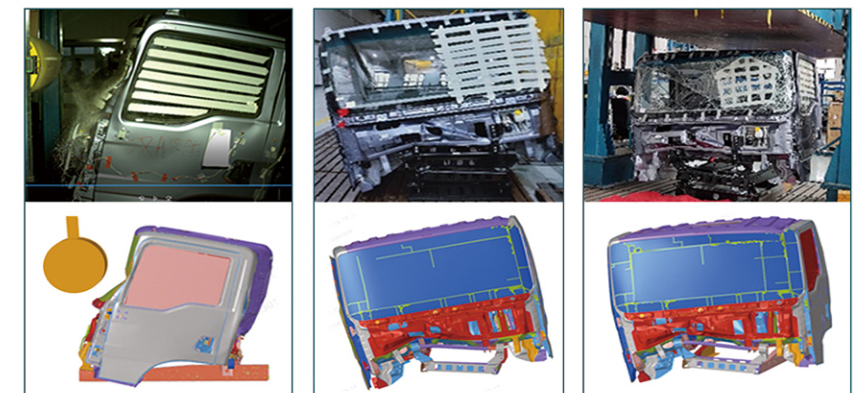
Cab

The HOWO cab integrates European technology with a people-oriented design concept. Featuring reinforced body panels crafted from high-quality cold-rolled steel and manufactured with advanced welding equipment overseas, it offers superior strength and enhanced safety. The front wall and doors are reinforced with anti-collision beams, while comprehensive collision analyses have been conducted on the front, roof and rear sections.



Test verification

The cab has undergone comprehensive collision test verification and analysis. SINOTRUK Light-duty Truck always puts the personal safety and interests of truck drivers first.



Strong brake system

Widened brake shoes, ABS + ASR, pneumatic braking system, wear alarm devices for front and rear axles, and automatic brake clearance adjuster



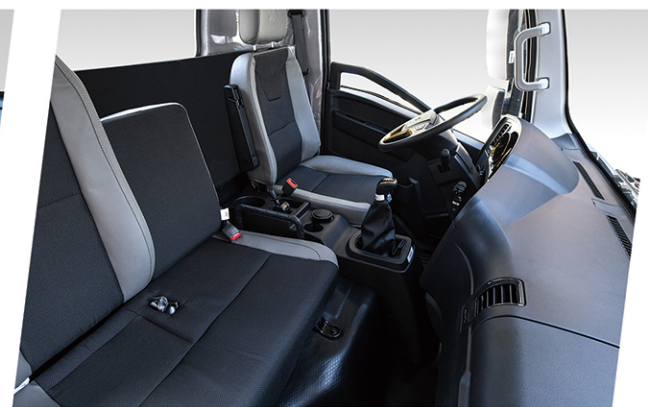
Comfortable & convenient driving, riding & operation

During the design of the T3M series, full consideration was given to ensuring convenient operation and comfortable driving/riding experiences for drivers, effectively reducing fatigue during long-distance trips.



Multi-functional steering wheel

Control buttons for in-cab electrical devices are integrated into the steering wheel, enhancing driving safety.



Sufficient space

Ample legroom ensures greater comfort for both drivers and passengers.



Instrument warning

Equipped with a color-screen instrument and a barrel-type instrument cover, the instrument panel delivers clear visibility both day and night. The instrument's audio-visual alarm function instantly notifies the driver of vehicle fault information.



Tidy storage

Idle space inside the cab is designed as storage boxes, facilitating item storage and keeping the cab neat and organized.

Beautiful and Practical Exterior Design

Sky blue sunshade film
Effectively block glare to ensure safer driving, minimize UV exposure, and slow interior trim aging

High-end large-curved rearview mirror
The large-curved rearview mirrors come standard with electric heating and electronic adjustment, showing care in every detail

Industry-exclusive sedan-type water guide gutter
Prevent water accumulation and erosion, increase cushioning, and enhance collision safety

F-type flying wing daytime running light
LED 'Angel Wings' daytime running lights, featuring high brightness to effectively alert passing vehicles and provide angel-like protection

Front grille composed of SINOTRUK's LOGO
The front grille composed of SINOTRUK's LOGO strengthens brand recognition

T3M Series Product Configuration Table

Model No.	ZZ1047C3314B1/ J1B-030TY18D2035 NV56S	ZZ1147H471CE1/ Q2W-046FM23D3280 N42V15S	ZZ1077F3815E175/ 27B-024FY19D2035 NZV75S	
Emission	Euro II	Euro III	Euro V	
GVW (Kg)	7500	14000	7500	
Bearing capacity (t)	4750	9195	3590	
Announcement parameter	Overall dimensions (mm)	5990*2200*2450	8267*2300*2676	6890*2165*2550
	Wheelbase (mm)	3280	4700	3800
	Curb mass (kg)	2750	4805	3910
Powertrain	Engine (model/horsepower ps/maximum torque N.m)	YC4FA120-33/120/345	MC05.18-30/180/700	YCY25L155-50/155/450
	Transmission	WLY6GS42	HW95508STC	WLY6GS46
	Rear axle	3.5 t (drum type)	8.0 t (drum type)	3.5 t (drum type)
Basic configuration	Cab width/type	1880/ flat roof single-cab	2080/ flat roof double-cab	2080/ flat roof single-cab
	Frame (web height * frame width)	180*800	232*865	195*800
	Front axle	2.0 t (drum type)	3.2 t (drum type)	2.0 t (drum type)
	Suspension	3/5+3	9/12+9B	3/5+3HB
	Tires	7.00R1614PR tubeless tire	255/70R22.516PR	7.50R1616PR tubeless tire
Function configuration	Dimensions of cargo compartment	4150*2300*500	6250*2300*550	5150*2150*550
	Remote control key central lock and power doors and windows	•	•	•
	Ventilation, heating and A/C	◦	◦	◦
	Curtain	◦	◦	◦
	Multi-functional steering wheel	•	•	•
	Electric A/C	•	•	•
Color instrument cluster	•	•	•	

Application of T3M Series Models

